

Design 1 Oczyszczalnia Ścieków Radomyśl Nad Sanem, MXP7+JQ7 Żabno

Shading Heatmap



Shading by Field Segment

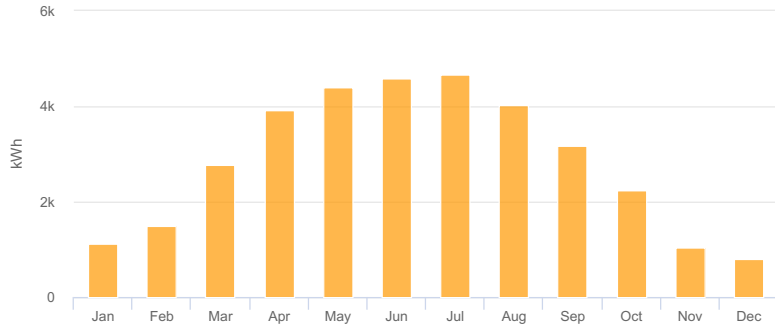
Description	Tilt	Azimuth	Modules	Nameplate	Shaded Irradiance	AC Energy	TOF ²	Solar Access	Avg TSRF ²
Field Segment 1	35.0°	123.8°	41	18.0 kWp	1,160.2kWh/m ²	16.9 MWh ¹	92.8%	98.9%	91.8%
Field Segment 3	35.0°	213.5°	41	18.0 kWp	1,183.2kWh/m ²	17.3 MWh ¹	95.9%	97.6%	93.6%
Totals, weighted by kWp			82	36.1 kWp	1,171.7kWh/m²	34.2 MWh	94.4%	98.2%	92.7%

¹ approximate, varies based on inverter performance
² based on location Optimal POA Irradiance of 1,264.0kWh/m² at 38.5° tilt and 188.1° azimuth

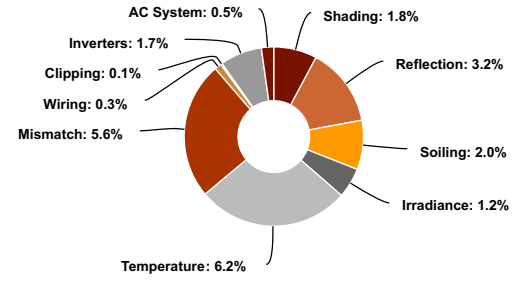
Solar Access by Month

Description	jan	feb	mar	apr	may	jun	jul	aug	sep	oct	nov	dec
Field Segment 1	99%	99%	99%	99%	99%	99%	99%	99%	99%	99%	99%	99%
Field Segment 3	99%	98%	98%	97%	97%	97%	97%	97%	98%	98%	99%	99%
Solar Access, weighted by kWp	99.0%	98.7%	98.4%	98.2%	97.9%	98.1%	98.1%	98.2%	98.3%	98.6%	98.9%	99.0%
AC Power (kWh)	1,123.6	1,486.7	2,762.6	3,931.0	4,390.4	4,576.3	4,673.7	4,020.0	3,174.4	2,229.3	1,035.0	806.4

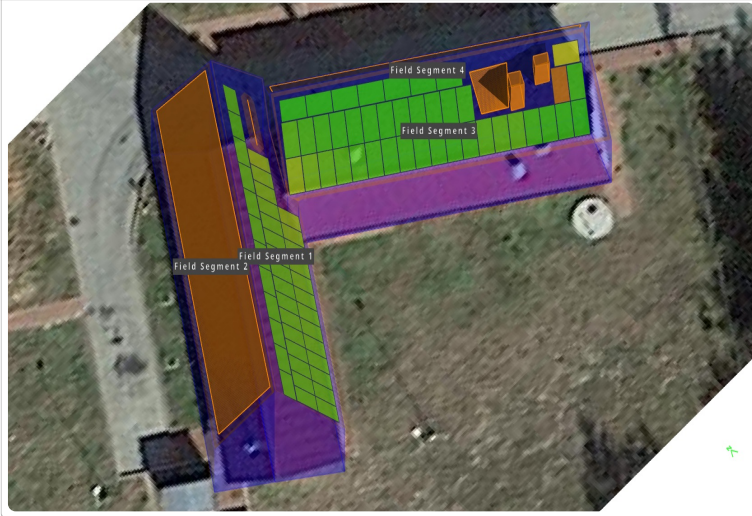
Monthly Production



Sources of System Loss



Southwestern Angle



Southeastern Angle

